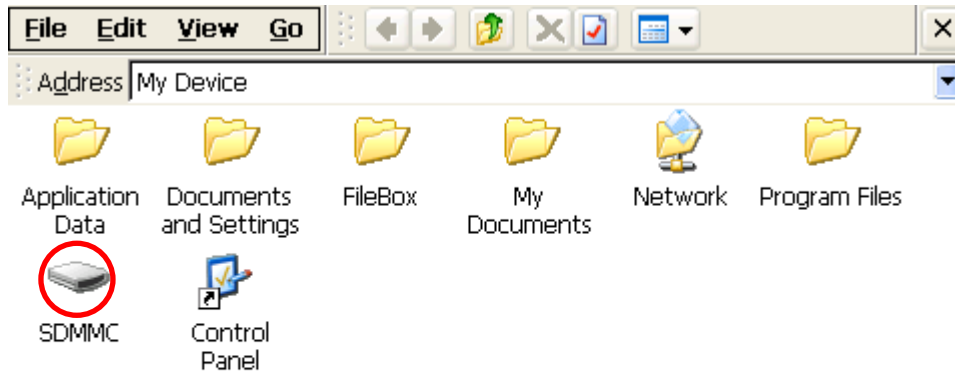
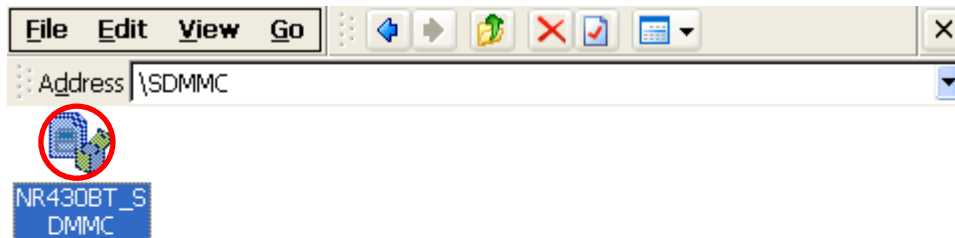


NR430BT patch installation instructions

1. Make certain if you have ActiveSync software installed on your PC
2. Switch on NavRoad device
3. Connect the device to PC USB with supplied cable
4. Make sure if the SD card is inserted
5. On your PC choose **My computer**
6. In **My computer** window choose **Mobile Device**
7. In **Mobile Device** window choose SD card folder - **SDMMC**
8. Copy downloaded NR430BT_SDMMC.cab file to SD card by dragging it to **SDMMC** window
9. In main device's menu choose **Settings**
10. Choose **Files Explorer**
11. Choose SD card folder– **SDMMC** by tapping it twice as shown below



12. Run NR430BT_SDMMC.cab installation file by tapping it twice



13. Tap **OK** to confirm installation folder

